

S.E. 1/4 OF  
 S.E. 1/4 OF N.E. 1/4 OF  
**SECTION 23, T.5N., R.2 W., S.L.B. & M.**  
 ROY CITY

104

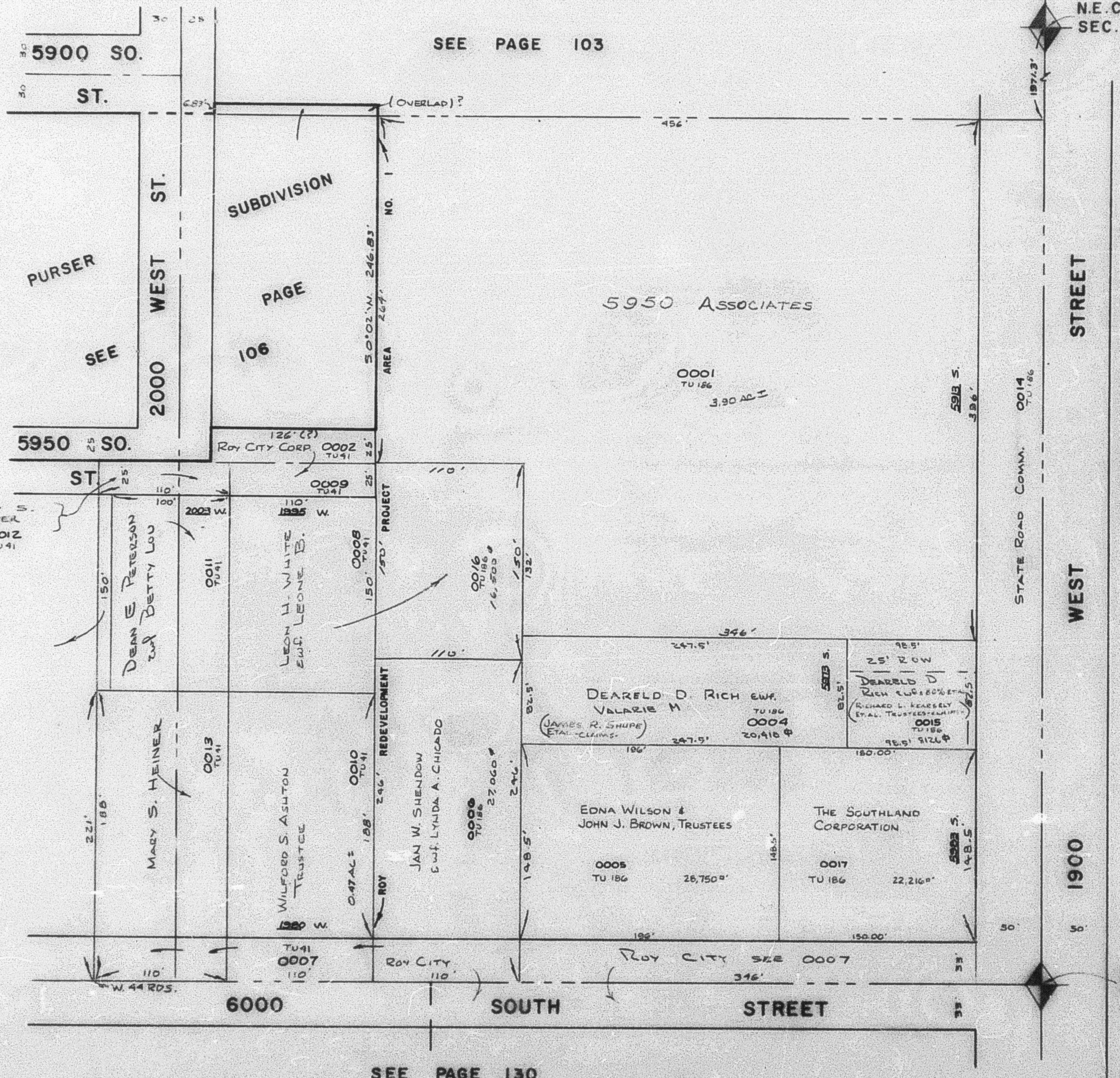
TAXING UNIT: 41, 186

PREFIX: 09-104

SCALE: 1" = 60'

SEE PAGE 103

N.E. COR.  
 SEC. 23



PURSER  
 SEE  
 2000 WEST ST.

SUBDIVISION  
 PAGE  
 106

5950 ASSOCIATES

0001  
 TU 186  
 3.90 AC ±

126' (?)  
 Roy City Corp. 0002  
 TU 41

MARY S.  
 HEINER  
 0012  
 TU 41

DEAN E. PETERSON  
 and BETTY LOU

LEON H. WHITE  
 and LEONE B.

0016  
 TU 186  
 16,500

SEE PAGE  
 105

MARY S. HEINER

WILFORD S. ASHTON  
 TRUSTEE

JAN W. SHENDOW  
 and LYNDIA A. CHICAGO

0008  
 TU 186  
 27,060

DEARLE D. RICH and  
 VALARIE M.  
 (JAMES R. SHUPP  
 ETAL - CLAIMS)  
 0004  
 TU 186  
 20,910 ±

DEARLE D.  
 RICH and VALARIE M.  
 (RICHARD L. KEARSELY  
 ETAL. TRUSTEES)  
 0015  
 TU 186  
 95.51 ± 12L ±

EDNA WILSON &  
 JOHN J. BROWN, TRUSTEES

THE SOUTHLAND  
 CORPORATION

0005  
 TU 186  
 26,750 ±

0017  
 TU 186  
 22,216 ±

0007  
 TU 41  
 110'

Roy City SEE 0007

SEE PAGE  
 140

S.E. COR.  
 OF N.E.  
 1/4, SEC.  
 23

SEE PAGE 130